

# Sew On...Sew Forth

1 [www.westsidesewing.com](http://www.westsidesewing.com) 319-365-3075

Volume 31 No.1

Spring Classes 2026

## West Side Sewing has you covered! Introducing two new fabulous machines....

### THE NEW TOP-OF-THE-LINE

#### Viking Designer Epic 3 Nordic Frost Edition Sewing & Embroidery Machine

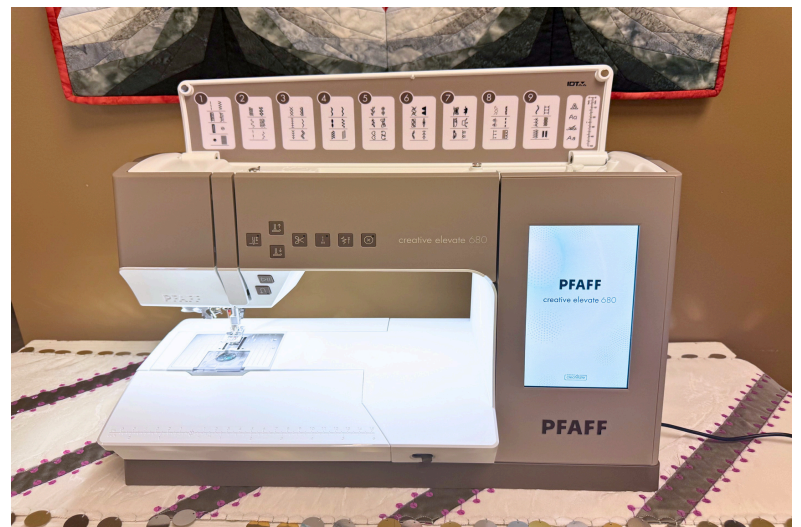
We're Changing The Way you Create!  
Embroider like never before...  
Free-Arm Embroidery  
Designer Embellishment Attachment Capabilities  
New style embroidery unit  
Embroidery Projection  
Sewing Projection  
Integrated Dual Feed Technology  
JoyOS Advisor  
And So Much More!  
**Click the Epic 3 photo for more information!**



### THE NEW OPTIONAL EMBROIDERY UNIT

#### Pfaff Creative Elevate 680 Sewing & Embroidery Machine

The CreativeElevate 680 machine delivers exceptional Sewing performance for makers of every level. Add the optional embroidery unit to unlock a world of Embroidery possibilities...  
The Original IDT Walking System  
Large Color Capacitive Touch Screen  
Exclusive Pfaff Stitch Techniques  
Built-In Learning Center  
Built-In Quick Help  
And So Much More!  
**Click the Creative Elevate 680 photo for more information!**



## Stop in today for your introductory pricing!

# Sew On...Sew Forth

## Volume 31 No. 1

### Spring Classes 2026

2 [www.westsidesewing.com](http://www.westsidesewing.com) 319-365-3075

### QUILTING

#### BEGINNING QUILTING 101

2 (2 ½ hr sessions) \$55 **Dawn**  
Never made a quilt before and would like to? Then this class is for you! Create a memorable 45" x 75" quilted throw that you'll enjoy for years. Best of all, you'll complete this project in class! **Must come prior to class date for fabric selection. Machine required & WSS Fabric fee required.**



Wednesday March 25 & April 1 9:30-12:00 pm OR  
Thursday April 16 & 23 4:30-7:00 pm

#### FREE MOTION QUILTING

1 (2 ½ hr session) \$35 **Dawn**  
Machine quilting is art created by your hands, just like hand quilting... the needle just moves faster. Come to this class so you can get started learning this fascinating free motion technique. You'll be amazed at all of the tips you'll learn to achieve the desired results that you've been looking for. **Machine required. WSS Kit fee required.**



Friday March 27 9:30-12:00 pm OR  
Saturday April 18 9:30-12:00 pm



#### NEW! TEMPERATURE QUILT

2 (3 hr sessions) \$55 **Marcie**  
Are you ready to make a really fun project? This one uses an easy block pattern and incorporates the daily high and low temperatures and any precipitation. Temperature quilts can cover a month, a year, or any block of time you prefer. Our quilt will cover the month of October. Join me and have fun with this new way of designing a quilt. **Machine required. WSS Fabric Fee Required.**

Monday March 23 & 30 1:00-4:00 pm

#### NEW! ARIZONA CACTUS

2 (4 hr sessions) \$65 **Marcie**  
This beautiful quilt is made using Foundation Paper Piecing. Whether you are experienced with FPP OR if you want to learn this technique, this is a fun, easy project. The designer made this pattern for beginners at FPP. Join me and see how easy it is to use this technique. **Machine required. WSS Fabric Fee Required.**



Tuesday April 28 & May 5 12:00-4:00 pm

### West Side Sewing Hours

9 AM to 5 PM Monday through Friday

9 AM to 7 PM Thursday

9 AM to 4 PM Saturdays

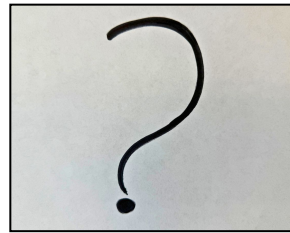
Closed on Sundays

Visit us at [www.westsidesewing.com](http://www.westsidesewing.com)

Email: [westsidesewing@mediacombb.net](mailto:westsidesewing@mediacombb.net)

319-365-3075

1-800-798-1655



#### NEW! MYSTERY QUILT BLOCK

1 (2 ½ hr session) \$35 **Marcie**  
Our Mystery Quilt continues for Blocks 3, 4 & 5. The rules are the same as for Blocks 1 & 2. It is not too late to join the fun. Just come to the Block 3 class for the information to get started. You won't want to miss the chance to make this extraordinary project! **Machine required. WSS Fabric fee required.**

Block 3

Monday March 16 1:30-4:00 pm

Block 4

Monday April 13 1:30-4:00 pm

Block 5

Monday May 4 1:30-4:00 pm

### MACHINE ART

#### NEW! KENNEDY BAG

2 (3hr session) \$55 **Shelly S.**  
This structured messenger style bag has lots of pretty detailing. You will add coordinating fabric on the flap and corners, buckles for attitude and a magnetic snap to keep it all inside. This modern bag is large enough to carry all of your essentials. **Machine Required & WSS Fabric fee required.**



Thursday March 19 & 26 1:00-4:00 pm OR  
Saturday April 11 & 25 12:30-3:30 pm



#### NEW! SEW ORGANIZED

1 (4 hr session) \$40 **Shelly S.**  
Sew Cute! Sew Efficient! Sew Organized! Store your sewing and crafting essentials within easy reach. Eight pockets and a pincushion slide onto a sturdy steel frame. **Machine Required & WSS Fabric fee required.**

Monday April 20 12:30-4:30 pm OR  
Saturday May 30 9:00-1:00 pm

#### NEW! EASY PILLOWCASE

1 (3 hr session) \$35 **Shelly S.**  
A Quick and Easy Project that is perfect for both the beginning and expert sewer! We'll use a clever rolling technique to create clean, enclosed professional looking seams. You'll want to make several for your bed or to give away as gifts! **Machine Required & WSS Fabric fee required.**



Tuesday April 21 9:30-12:30 pm OR  
Saturday May 16 12:30-3:30 pm



#### NEW! APPLIQUE PIZZAZZ

1 (3 hr session) \$35 **Shelly S.**  
Let's take the basic applique techniques a step further. Many different stitches, other than the satin stitch can be used. Add color and variety to your project by trying other stitches and also by using various colors of thread. The project can be made into an item of your choice – pillow cover, banner, or a wall hanging. **Machine Required. WSS Fabric fee Required.**

Thursday March 12 1:30-4:30 pm

# Sew On...Sew Forth

## Volume 31 No. 1

3 [www.westsidesewing.com](http://www.westsidesewing.com) 319-365-3075

Spring Classes 2026

### VIKING AND PFAFF KNOW HOW



#### MASTERING THE BASICS

1 (2 ½ hr session) **FREE! \*A.C.** Shelly S.  
You will learn about different types of needles and threads to expand your sewing fun. You will review threading, bobbin winding, function buttons and the sewing advisor. You will stitch out sewing techniques and review bobbin case cleaning. **Viking OR Pfaff Machine required. WSS Kit fee Required.**

Friday March 13 9:30-12:00 pm OR

Saturday May 16 9:30-12:00 pm

#### PROGRAM EXTENDED

1 (2 ½ hr session) **FREE! \*A.C.** Marcie  
We'll review how to use your machine's program feature then stitch on some pretty ribbons. Your own stitching is the perfect way to personalize gifts. The ribbons can be used as wraps for mugs, plants, and more. You may even use this technique to make gift bags! **Machine required. WSS Kit Required.**



Wednesday April 15 1:00-3:30 pm OR

Thursday May 21 4:00-6:30 pm



#### STITCHBOOK FOLIO

1 (3 hr session) **FREE! \*A.C.** Marcie  
Are you tired of looking at the decorative stitches on the screen of your sewing machine and thinking how flat and dull they appear? Make your own stitch samples and bring those stitches to life with colorful thread! You'll be thinking up projects to show-off those gorgeous stitches. We'll make an entire book

you can reference any time. **Machine required. WSS Fabric Fee Required.**

Monday March 9 1:00-4:00 pm OR

Thursday May 28 4:00-7:00 pm

#### NEW! TWIN NEEDLE

1 (2 ½ hr session) **FREE! \*A.C.** Shelly S.  
Come explore twin needle stitching. Use two needles connected by a single shank in your machine to create two parallel lines of stitching. With this technique you will amp up your decorative sewing. **Viking or Pfaff Machine required. WSS Kit fee Required.**



Saturday March 14 9:30-12:00 pm OR

Friday April 3 9:30-12:00 pm



#### NEW! SERGER FUN - JAPANESE KNOT BAG

1 (6 hr session) **FREE! \*A.C.** Marcie  
This is a ridiculously easy project for your serger! It is a self-closing, lightweight bag you can use to carry almost anything. Pick your favorite colors for the outside and lining. Tuck it in your purse until you need it. Then pull it out and have an instant bag to carry more

"stuff". **Machine required. WSS Fabric Fee Required.**

Monday April 6 9:30-3:30 pm



#### NEW! MENU L

1 (2 hr session) **FREE! \*A.C.** Shelly S.  
Come hone your skills and master the techniques of dimensional stitches. You can use the applique stitches to embellish quilts, the pop up stitches to jazz up your bags and the sequin stitches to add glamor everywhere! **WSS Kit Fee Required.**

Tuesday April 14 9:30-11:30 am OR

Saturday May 30 1:30-3:30 pm

#### NEW! CIRCLE ATTACHMENT

1 (3 hr session) **FREE! \*A.C.** Marcie  
You'll be smiling when you are stitching circles! With a circle attachment or Wish Table for your machine we'll use your built-in decorative stitches and colorful thread to make a beautiful panel. You will see how easy it is! Your machine does all the work! Turn your panel into a pillow, tote or whatever you wish. **Machine required. WSS Fabric Fee Required.**



Thursday April 30 4:00-7:00 pm OR

Monday May 18 1:00-4:00 pm

### EMBROIDERY

#### EMBROIDERY STITCH OUT

1 (1 ½ hr session) **FREE! \*\*A.C.** Shelly S.  
Learn how to hoop your fabric properly, operate the unit, rotate designs and much more. This class is also useful for the embroiderer who wants to review the basics. **Viking or Pfaff machine with embroidery unit required. WSS Kit Fee required.**



Tuesday March 24 9:30-11:00 am OR

Saturday April 11 9:30-11:00 am



#### EMBROIDERY & SEWING STABILIZER WORKSHOP

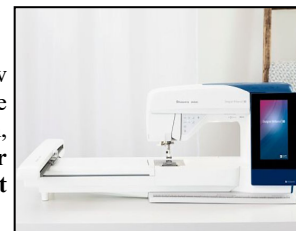
1 (1 ½ hr session) **FREE! \*\*A.C.** Katie  
This is a workshop that develops skills in hooping, stabilizing and placement. You'll be learning a variety of toppings, backings, spray adhesives and helpful products. **No machine necessary. WSS Kit fee Required.**

Monday April 6 9:30-11:00 am OR

Saturday April 18 9:30-11:00 am

#### CUSTOMIZING BASICS

1 (2 ½ hr session) **FREE! \*\*A.C.** Shelly S.  
This embroidery class is the perfect overview of your "Part 2" private training. Practice positioning, rotation, scale, resize, zoom, duplicate, mirror, fonts, and more! **Viking or Pfaff machine with embroidery unit required. WSS Kit Fee required.**



Friday April 17 9:30-12:00 pm

# Sew On...Sew Forth

## Volume 31 No. 1

4 [www.westsidesewing.com](http://www.westsidesewing.com) 319-365-3075

Spring Classes 2026

### EMBROIDERY



#### DESIGN POSITIONING 1 & 2

1 (2 ½ hr session) **FREE!** \*\*A.C. Shelly S.  
In this class, we will learn placement of your designs. You will also take a design and place it on a project and do several in one hooping, saving both stabilizer and time. Perfect for napkins or any multiple embroidery that can be done at one time. **Viking or Pfaff machine with embroidery unit required. WSS Kit Fee**

required.

Tuesday March 10 9:30-12:00 pm

#### NEW! EMBROIDERY HEXAGON BAG

1 (6 hr session) \$55 \*\*A.C. Shelly S.  
Stitch the Hexagon Log Cabin bag completely in-the-hoop! Available in four sizes, this bag is fully lined and perfect for any day trip. Come use your embroidery machine to quilt and put in a zipper! **Viking or Pfaff machine with embroidery unit required. WSS Fabric Fee required.**



Tuesday May 26 9:30-3:30 pm

#### EMBROIDERY 101 TECHNIQUES

In few words said... these classes are for you. These hands-on classes will take you through all of the many embroidery applications. Try embroidery applique, cutwork, using optional hoops, 3 dimensional designs, chenille and sew much more. Intimidated by embroidering on plush towels, t-shirts, etc?

These classes will get you feeling like an embroidery pro in no time.

#### NEW! EMB 101: PUFFY FOAM

1 (2 ½ hr session) **FREE!** \*\*A.C. Linda  
Do you want to add dimension to your embroidery? Here is your chance to learn a simple way to do just that. Using Puffy Foam for lettering and other embroideries is fun and easy. **Viking or Pfaff machine with embroidery unit required. WSS Kit Fee required.**



Wednesday March 18 9:30-12:00 pm OR

Saturday March 21 9:30-12:00 pm



#### NEW! EMB 101: FRINGE & LOOPY FLOWERS

1 (2 ½ hr session) **FREE!**\*\*A.C. Linda  
It is fun to learn new techniques! Come create fringe. These designs will add a beautiful dimension to your work. **Viking or Pfaff machine with embroidery unit required. WSS Kit Fee required.**

Friday April 10 9:30-12:00 pm OR

Saturday April 18 1:00-3:30 pm

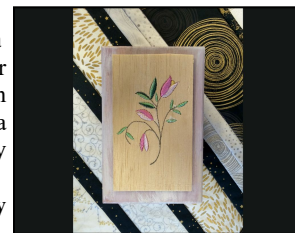
#### NEW! EMB 101: Balsa WOOD

1 (2 ½ hr session) **FREE!** \*\*A.C. Linda  
Have you ever wondered what your embroidery machine can do? Come and learn how you can stitch on Balsa Wood. Balsa is a thin wood that makes simple designs really stand out. Come learn a great technique.

**Viking or Pfaff machine with embroidery unit required. WSS Kit Fee required.**

Saturday May 9 1:00-3:30 pm OR

Wednesday May 20 9:30-12:00 pm

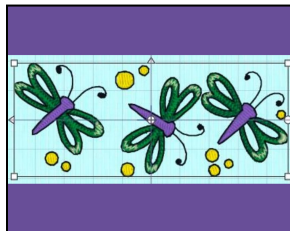


### EMBROIDERY SOFTWARE

#### CREATIVATE LESSON 1

1 (3 hr session) **FREE!** Katie  
Let's get familiar with the home tab! We will cover the clipboard tools, selection tools, how to create fonts in Quick Fonts to be added into the letter options, and much more!

**WSS CREATIVATE ALL LEVELS PERPETUAL OWNERS ONLY**



Saturday March 7 9:30-12:30 pm OR

Monday March 9 9:30-12:30 pm

#### CREATIVATE LESSON 2

1 (2 hr session) **FREE!** Katie  
On lesson two, we will be working with Super Design and Encore, creating monograms, and adding Flourishes to them. You will love being able to personalize gifts for family and friends! **WSS CREATIVATE ALL LEVELS PERPETUAL OWNERS ONLY**

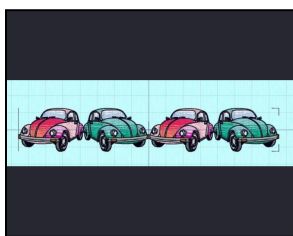


Saturday April 11 9:30-11:30 am OR

Monday April 13 9:30-11:30 am

#### CREATIVATE LESSON 3 & 4

1 (1 ½ hr session) **FREE!** Katie  
In this lesson you will learn how to create custom endless designs! We'll also learn how to split a large design into smaller parts to make them fit into multiple hoopings! **WSS CREATIVATE ALL LEVELS PERPETUAL OWNERS ONLY**



Saturday May 9 9:30-11:00 am OR

Monday May 11 9:30-11:00 am

#### CREATIVATE LESSON 5

1 (2 hr session) **FREE!** Katie  
In this lesson we will focus on the many ways to Select, Group and Ungroup embroideries in the CREATIVATE software. **WSS CREATIVATE ALL LEVELS PERPETUAL OWNERS ONLY.**

Monday March 16 9:30-11:30 am OR

Saturday March 21 9:30-11:30 am



“Like” Us On

facebook

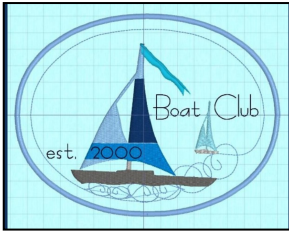


# Sew On...Sew Forth

Volume 31 No. 1

5 [www.westsidesewing.com](http://www.westsidesewing.com) 319-365-3075

Spring Classes 2026



## CREATIVATE LESSON 6

1 (2 hr session) **FREE!**

**Katie**

In this lesson we will explore the modify tab. Find out just how much you can change an embroidery design from adding and subtracting stitches to inserting new color commands! **WSS CREATIVATE GOLD & PLATINUM PERPETUAL OWNERS ONLY**

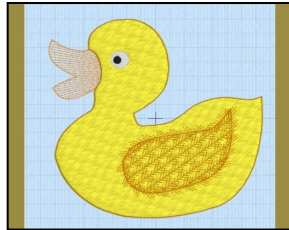
**Monday April 13 12:00-2:00 pm OR  
Saturday April 18 11:30-1:30 pm**

## CREATIVATE LESSON 7

1 (2 hr session) **FREE!**

**Katie**

In lesson 7 you'll learn how to create an Express Design in Creativate embroidery and edit your Express Design in Creativate Digitizing. **WSS CREATIVATE PLATINUM PERPETUAL OWNERS ONLY.**



**Saturday May 9 11:30-1:30 pm OR  
Monday May 11 11:30-1:30 pm**



## CREATIVATE LESSON 8

1 (3 hr session) **FREE!**

**Katie**

In this lesson, we will explore basic digitization principles and techniques to shapes created in CREATIVATE Draw and Paint. **WSS CREATIVATE PLATINUM PERPETUAL OWNERS ONLY**

**Monday March 16 11:30-2:30 pm OR  
Saturday March 21 11:30-2:30 pm**

## More details...Class Policy

Everyone is welcome to attend classes at West Side Sewing. Class space is limited and classes fill quickly, please register early. We strive to teach you the most at the best possible value.

†All classes require advance registration.

†Classes involving kits require registration a minimum of 3 days prior to class date.

†Kit payment is required at the time of registration and is non refundable

†Receive a 10% class discount on all non-sale supplies used in class. Kits have been included with a 10% discount.

†Classes will be cancelled 3 days prior to class date if insufficient registration.

Sign up early ☺.

†Customer cancelling one week or more prior to the class start date will receive a store credit, if a fee was required. **Class Pass classes do not qualify for credit.**

†If you have not purchased your sewing machine from West Side Sewing your fees for Advanced Application classes are as follows: \*A.C. \$75, \*\*A.C. \$125.

Note class descriptions where applicable. Class Pass does not apply.

**†PURCHASED WEST SIDE SEWING FABRIC KIT REQUIRED**

Thank you in advance for helping to make our class program run smoothly.

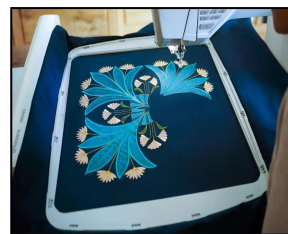
## NEW! CREATIVATE SPLIT LETTER BANNER

1 (6 hr session) **FREE!**

**Katie**

In this hands-on workshop we will be creating an in the hoop banner on the computer and then stitching it out. We will learn about exporting applique pieces, either to a cutting machine or to trace and precut. We will learn additional time savers for Platinum owners. **WSS MYSEWNET GOLD AND PLATINUM PERPETUAL OWNERS ONLY. WSS Kit Fabric required.**

**Monday May 18 9:30-3:30 pm OR  
Saturday May 30 9:30-3:30 pm**



## NEW! CREATIVATE TURNABLE HOOP

1 (2 hr session) **FREE!**

**Katie**

The Turnable Hoop is perfect for combining embroideries in mySewnet Embroidery and our software will automatically split it for us. We'll explore combining design elements in mySewnet Embroidery (Silver, Gold or Platinum levels) for the 360mm x 350mm Turnable Hoop. We'll also look at some tips and tricks for using the Turnable Hoop. **WSS CREATIVATE SILVER, GOLD & PLATINUM PERPETUAL OWNERS ONLY**

**Monday April 20 9:30-11:30 am OR  
Saturday April 25 9:30-11:30 am**

## Attention all West Side Sewing Valued Customers!

**We'd like to emphasize how important it is to sign up for classes at a minimum of 1 week prior to class date. The earlier the better! This ensures us adequate time to fill the attendance to avoid the class being cancelled.**

**A lot of time and effort goes into generating these classes for you, which keeps you creating projects to your fullest potential!**

**Don't forget about all of your FREE Advanced Application classes when you've purchased your machine or Software at West Side Sewing!**

# Sew On...Sew Forth

6 [www.westsidesewing.com](http://www.westsidesewing.com) 319-365-3075

Volume 31 No. 1

Spring Classes 2026

## March 2026

Sunday	Monday	Tuesday	Wednesday	Thursday	Friday	Saturday
1	2	3	4	5	6	7 Creativate Lesson 1 9:30-12:30 pm
8	9 Creativate Lesson 1 9:30-12:30 pm Stitchbook Folio 1:00-4:00 pm	10 Design Positioning 1 & 2 9:30-12:00 pm	11	12 Applique Pizzazz 1:30-4:30 pm	13 Mastering the Basics 9:30-12:00 pm	14 Twin Needle 9:30-12:00 pm
15	16 Creativate Lesson 5 9:30-11:30 am Creativate Lesson 8 11:30-2:30 pm Mystery Block 3 1:30-4:00 pm	17 <b>St. Patrick's Day</b>	18 Emb 101: Puffy Foam 9:30-12:00 pm	19 Kennedy Bag 1:00-4:00 pm	20	21 Creativate Lesson 5 9:30-11:30 am Emb 101: Puffy Foam 9:30-12:00 pm Creativate Lesson 8 11:30-2:30 pm
22	23 Temperature Quilt 1:00-4:00 pm	24 Embroidery Stitchout 9:30-11:00 am	25 Beginning Quilting 9:30-12:00 pm	26 Kennedy Bag 1:00-4:00 pm	27 Free Motion Quilting 9:30-12:00 pm	28
29	30 Temperature Quilt 1:00-4:00 pm	31				

## April 2026

Sunday	Monday	Tuesday	Wednesday	Thursday	Friday	Saturday
			1 Beginning Quilting 9:30-12:00 pm	2	3 Twin Needle 9:30-12:00 pm	4
5 <b>Easter</b>	6 Embroidery Stabilizer Wkshp 9:30-11:00 am Japanese Knot Bag 9:30-3:30 pm	7	8	9	10 Emb 101: Fringe & Loopy Flowers 9:30-12:00 pm	11 Emb Stitchout 9:30-11:00 am Creativate Lesson 2 9:30-11:30 am Kennedy Bag 12:30-3:30 pm
12	13 Creativate Lesson 2 9:30-11:30 am Creativate Lesson 6 12:00-2:00 pm Mystery Block 4 1:30-4:00 pm	14 Menu L 9:30-11:30 am	15 Program Extended 1:00-3:30 pm	16 Beginning Quilting 4:30-7:00 pm	17 Customizing Basics 9:30-12:00 pm	18 Emb Stab Wkshp 9:30-11:00 am Creativate Les 6 11:30-1:30 pm Free Motion Quilting 9:30-12:00 pm Emb 101: Fringe & Loopy Flowers 1:00-3:30 pm
19	20 Creativate Turntable Hoop 9:30-11:30 am Sew Organized 12:30-4:30 pm	21 Easy Pillowcase 9:30-12:30 pm	22	23 Beginning Quilting 4:30-7:00 pm	24	25 Creativate Turntable Hoop 9:30-11:30 am Kennedy Bag 12:30-3:30 pm
26	27	28 Arizona Cactus 12:00-4:00 pm	29	30 Circle Attachment 4:00-7:00 pm		





West Side Sewing  
4100 First Avenue NE  
Cedar Rapids, Iowa 52402

Husqvarna *A tradition of excellence* VIKING